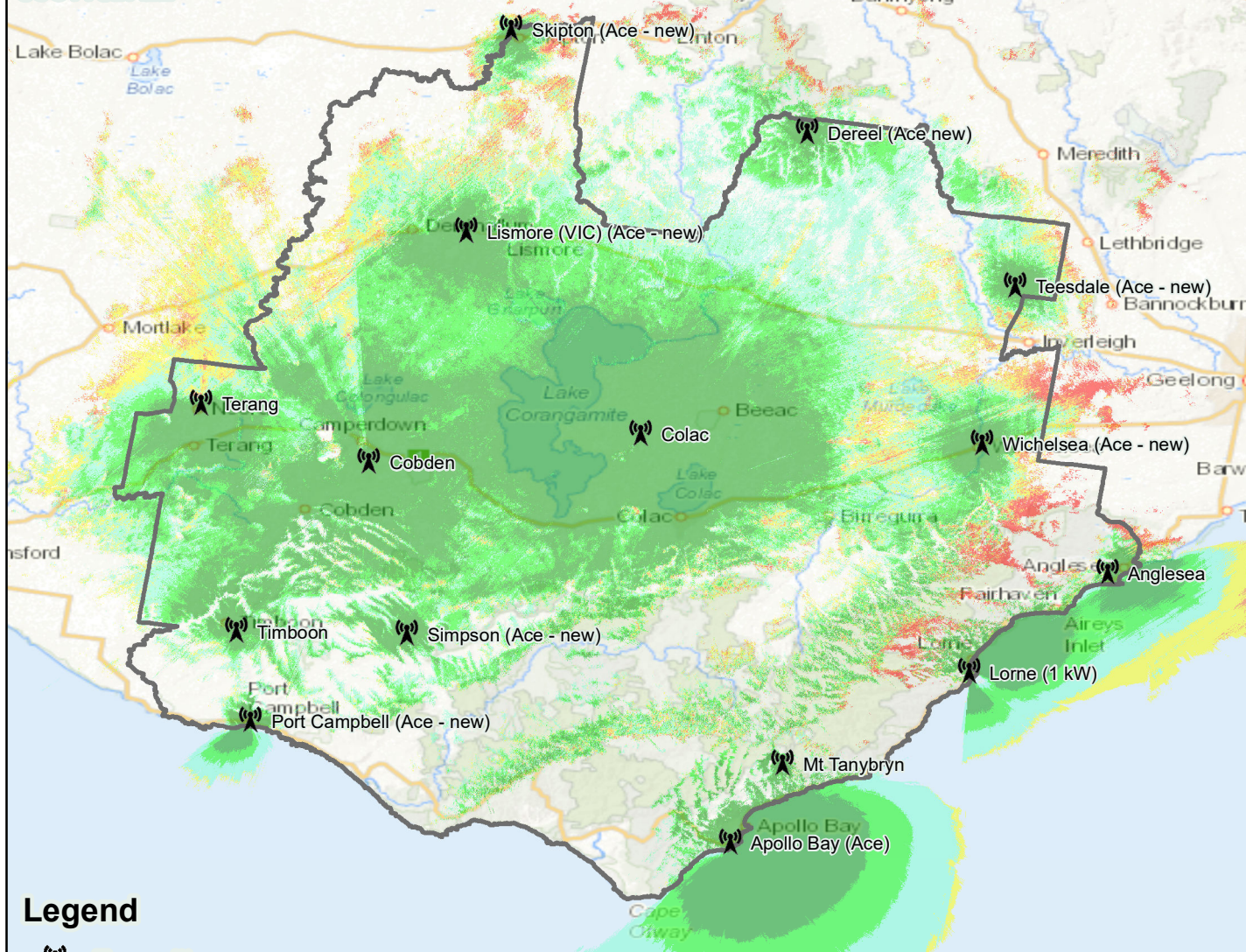




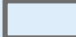

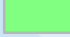
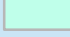

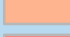

# ALLOTMENT 3: COLAC RA1

## Co-Channel Areas

BEGA  
 CAMPBELLTOWN  
 COFFS HARBOUR  
 RCZ (Bourke)  
 RCZ (Healesville North/Mt Buller)  
 GRIFFITH  
 MARYBOROUGH VIC  
 NAMBOUR  
 NEWCASTLE  
 RNEZ (Monto)  
 RNEZ (Stanthorpe/Tenterfield)  
 RNEZ (Bocoble)  
 SCOTTSDALE



## Legend

-  Transmitter
-  UCL\_AUS\_2011
-  Licence Areas
- C/N+1 Margin to Failure
  -   $C/N+I \geq 10\text{dB}$
  -   $5\text{dB} \leq C/N+I < 10\text{dB}$
  -   $0\text{dB} \leq C/N+I < 5\text{dB}$
  -   $-5\text{dB} \leq C/N+I < 0\text{dB}$
  -   $-10\text{dB} \leq C/N+I < -5\text{dB}$
  -   $C/N+I < -10\text{dB}$